



Leo & Steph



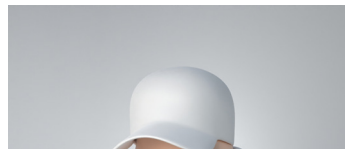
BIO

Leo and Stéphane, the dynamic French-Brazilian artistic duo, have made an indelible mark on the global art scene. Their collaborative masterpiece, KID CUP, a gender-neutral embodiment of the eternal, joyful inner child, has captured hearts worldwide. This iconic figure symbolizes unending optimism, perpetually in pursuit of the whimsical and radiant aspects of life, with their ever-present cup representing a love for life's offerings. Welcome to the enchanting world of the KID CUP FAMILY!

Leo, a Brazilian native who has called Paris home since 2008, is a versatile designer with expertise in graphic and interior design. His lifelong dedication to painting, sculpting, and drawing has enriched his eclectic portfolio. Moreover, Leo serves as an Artistic Director for a leading French e-commerce company.

On the other hand, Stéphane, with over 20 years of experience in the media industry, has held leadership roles at NRJ and ENDEMOL and currently excels as a TV producer at JLA GROUP. His deep passion for decoration and the creation of vibrant, playful artworks adds a unique dimension to the artistic world. Together, Leo and Stéphane form a dynamic duo poised to leave an indelible mark on the art world, with their fusion of cultural backgrounds and artistic expertise promising a vibrant explosion of creativity and enchantment.















Leo&Steph
Paris - France



J'adore!





















ence
享非凡



mIXc 萬象城





Olivier Rousteing (Balmain)



Celine Dion



Lee Jung-jae (Squid Game)



DJ Snake



Shakira



Miyavi & Melody



Kyllian Mbappé (Paris Saint-Germain)



www.leoetsteph.com



www.instagram.com/_leo_steph_

